

# STANLEY and DISTRICT

COMMUNITY ACTION PLAN  
2023-2028



*Stanley and District Community Action Plan  
Core Steering Group*



# STANLEY and DISTRICT

## COMMUNITY ACTION PLAN

### CONTENTS

Introduction

3

Our Community Now

Community Profile

4

Survey Views

6

Our Vision for the Future

8

Themes and Priorities

10

Action

12

Making it Happen

17

Our Community

18

### DID YOU KNOW?

We have one lead community organisation working with the interests of the whole community at the core of our workplan

#### **Stanley Development Trust**

Stanley Development Trust was formed in 2008 to improve the quality of life and environment of the village of Stanley and its surrounding area.

The Strategic Aim of the Trust is to develop a vibrant and sustainable community.  
The themes supporting this Aim are:

Improve Activities and Facilities, especially for Young People  
Conserve and Enhance the Environment and Heritage

# INTRODUCTION

Since 2010 we have been working to implement our first Community Action Plan which has helped to guide development of many aspects in the area. It has also been used by Stanley Development Trust and local groups to raise awareness and attract funds to achieve priorities identified in that plan, and make representation on behalf of the community.

This new Community Action Plan sets out our priorities for the next 5 years for the broader area of Stanley and District. It includes:

- Views and information about the Stanley and District area now
- A Vision for Stanley and District's future
- The issues that matter most to the community
- Priorities for projects and action
- A guide to next steps and who **might** be involved

**The 2023-2028 plan will be our guide for what we - as a community - try to make happen over the next 5 years**

## WORKING TOGETHER

The preparation of the plan has been organised by the core Stanley and District Community Action Plan Steering Group and included representatives from Stanley Development Trust, Stanley & District Public Hall, Redgorton and Stanley Parish Church, Stanley in Bloom, Stanley Exercise Group, Scottish Women's Institute, St Columba's Episcopal Church, Stanley Time Bank, West Stormont Woodland Group, Care & Wellbeing Project, local business, local residents and a supporting network of services and organisations.

The community engagement work has been carried out by Caroline Ness in her consultancy role for Stanley Development Trust. Templates and guidelines developed by the STAR Development Group were used throughout, just as they were for the 2010-2015 plan.

The work was funded by the Perth & Kinross Community Led Local Development Programme.

This plan will help us to develop priority projects in line with the community's needs and aspirations. The plan will also enable the community to work in partnership with other agencies and service providers.

## LOCAL PEOPLE HAVE THEIR SAY

The Action Plan has been informed by extensive community engagement carried out over a seven-month period from January – August 2023.

The process involved:

- carrying out a **Community Views Survey** delivered to all households
- developing specific questionnaires for **Young People** and **Businesses**
- **Stakeholder Interviews** with community organisations, service providers and businesses
- organising a **Community Futures Voting Event**
- preparing a **Community Profile** detailing facts and figures about the community

**221 COMMUNITY VIEWS SURVEY FORMS  
WERE COMPLETED**

**9 YOUNG PEOPLE AGED 5-24 YEARS  
COMPLETED QUESTIONNAIRES**

**19 STAKEHOLDER INTERVIEWS WERE HELD**

**12 BUSINESSES COMPLETED  
QUESTIONNAIRES**

**112 PEOPLE VOTED AT THE COMMUNITY  
FUTURES VOTING EVENT**

**THANKS TO EVERYONE WHO TOOK PART**



# OUR COMMUNITY NOW

To find out more about the community  
visit the Stanley Development Trust website  
<https://www.stanleydevelopmenttrust.org>

## STANLEY AND DISTRICT – SUMMARY COMMUNITY PROFILE

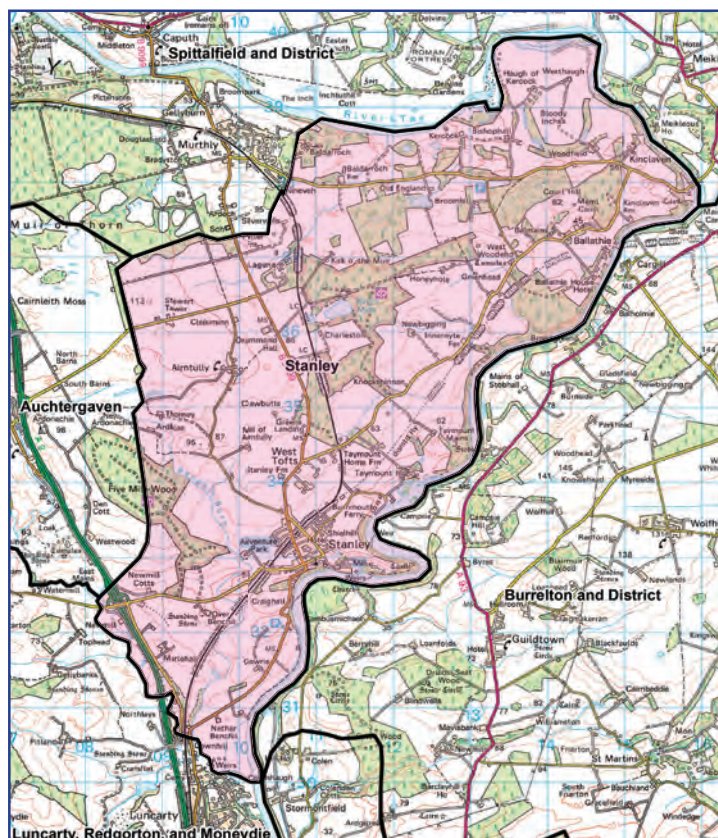
### LOCATION

The Stanley and District Community Council area is shown in the map right. The full Stanley and District Community profile and other community engagement reports are available on the Stanley Development Trust website.

Sitting north of Perth, the Stanley and District area includes the village of Stanley and the smaller settlements of West Tofts, Airtully, Kinclaven and Ballathie with the River Tay meandering along its east boundary. There are excellent links to both the North and South with further expansion of the road system due to complete in 2025. The area is surrounded by attractive walks and woodlands with access to a plethora of outdoor activities.

### POPULATION AND HOUSING

The area had a population of 2,002 at the last census in 2011 with mid-year estimates in 2020 showing a low increase to 2,038. The Census in 2011 also recorded a total of 903 households and has increased since then with new house builds. Both the population and housing levels will grow further with ongoing housing development in Stanley.



Map credited to: Perth & Kinross Council



### LOCAL ECONOMY

Stanley is the main village in the Stanley and District area and offers a solid range of retail and service options for the locality. Shopping and buying services locally is a key element of sustaining local provision. The area as a whole has a diverse range of businesses including agriculture, trades, hospitality, fishing, retail, horticulture and manufacturing to name a few. Stanley Mills is a long-standing tourist attraction but this is seasonal and onward visitor footfall across the local area appears less apparent. Ongoing planning and development of a local Community Hub will bring new economic opportunities to the area and potentially increase local employment prospects and new activities.

### SCHOOLS AND EDUCATION

Stanley Primary School delivers the local authority nursery and primary provision. Perth Grammar School is the associated local authority secondary school.

### HEALTH AND CARE

Services include the Stanley Medical Centre and one dispensing pharmacy. The closest hospitals are Perth (Perth Royal Infirmary) and Dundee (Ninewells Hospital).

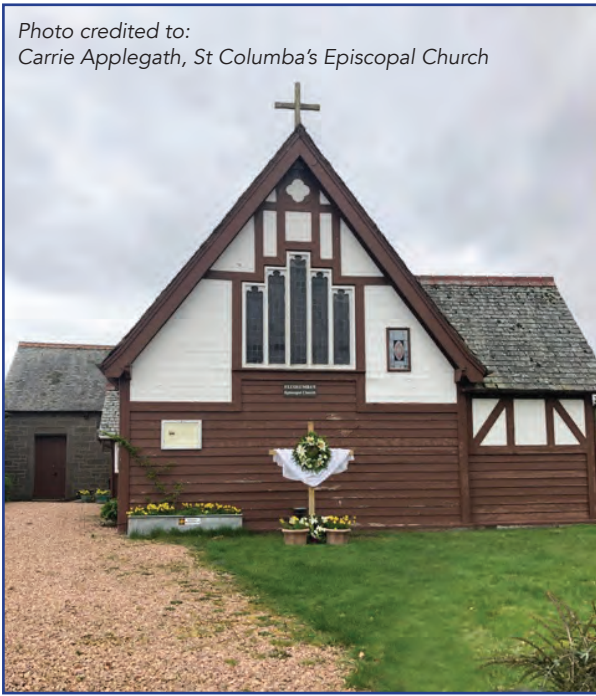
Balhousesie Luncarty Care Home is the nearest care home and Glenhelenbank, a small residential home is also relatively close by in Luncarty.

The Care & Wellbeing Project offers considerable support to local people to help them lead independent, healthy and active lives.



## COMMUNITY AND RECREATIONAL FACILITIES

Photo credited to:  
Carrie Applegath, St Columba's Episcopal Church



**Facilities:** Stanley & District Public Hall. Stanley Bowling Club, Tayside Hotel, Ballathie House Hotel, Kinclaven Parish Church, St Columba's Episcopal Church, Stanley Mills and Stanley Primary School are available to hire for community use.

**Churches:** Redgorton and Stanley Parish Church, St Columba's Episcopal Church, Kinclaven Parish Church.



Ballathie House

## COMMUNITY GROUPS AND ORGANISATIONS

**Community Development:** Stanley Development Trust, Stanley Time Bank, Stanley Community Group.

**Membership and Service:** Scottish Women's Institute.

**Children and Youth Groups:** Stanley Attachment Cadet Force, Guiding and Scout Association, 5th Perth Brownie Unit.

**Health, Wellbeing and Care:** Stanley Medical Centre, Care & Wellbeing Project, Stanley Soup Club, Stanley Lunch Club, Coffee Morning Group, Winter Watch, Stanley & District Men's Shed.

**Environmental and Heritage:** West Stormont Woodland Group, Stanley Swift Project, Stanley in Bloom, Stanley Mills, West Stormont Historical Society, C406 Tackle Litter Group.

**Sport, Recreational and Physical Activity Groups:** Stanley Health Walks, Stanley Exercise Group, Stanley Rifle Club, Stanley Bowling Club, Board Games Café, Stanley Amateur Football Club, Dee Hanford Yoga, Perthshire Freerunners.



Photo credited to: Norma Bryce

## ENVIRONMENT AND HERITAGE

**Outdoor Spaces & Attractions:** Shielhill Path, Thistlebrig, Stanley Beach, Campsie Linn, River Tay.

**Local Paths Network:** Shielhill Path; Stanley Beach and Campsie Linn; Stanley – Ballathie; North Wood (Bluebell Wood) – Ballathie; Stanley – Taymount Wood – Airtully; Five Mile Wood; Thistlebrig.

**Woods:** Taymount Wood, Five Mile Wood, Kinclaven Bluebell Wood.


**Heritage:** Stanley village was established to house the workers of Stanley Mills built in 1784 on the banks of the River Tay and closed in the late 1980's. Although the Mills is very well known for its historical importance, there are other lesser-known buildings that also attract historical or architectural merit.



# OUR COMMUNITY NOW

## Community Views Survey (Likes And Dislikes)

Results from the 221 responses received with some illustrative comments



Like	% of Responses
Environment and Open Spaces	59%
Nature of the Place	43%
Location	37%
Local Economy, Amenities & Services	34%
Community Spirit and the People	34%
Community Activities, Facilities & Organisations	25%
Roads, Parking & Transport	14%

"River Tay being so accessible"

"Rich environmental fragments – the River Tay corridor, Taymount, Five Mile, Kinclaven Bluebell Woods and other woodland areas and the current core path network"

"Nice place to raise children"

"Still partly rural, comfortable village feel about it. Not too big, still know most people"

"I like that it is surrounded by countryside while still being fairly close to the city"

"Rural aspect with a short drive to city of Perth"

"The stalwart volunteers supporting the many community projects, initiatives and aspirations"

"Variety of local businesses"

"The Stanley Development Trust is an asset to our Community"

"Village shops, especially Stanley Store, medical centre and pharmacy"

"People care about the community and the people"

"Relatively quiet and safe roads"

"Rural area but close to Perth with good transport links"

"Lots of clubs to get involved with in the community"



Dislike	% of Responses
Roads, Traffic & Transport	49%
Environment and Heritage	45%
Local Economy, Amenities & Services	32%
Housing and Utilities	30%
Anti-Social Behaviour and Crime	23%
Nature of the Place	16%
Community Facilities, Activities, Events & Groups	16%
Community Relations	10%

"Huge lorries (and buses) on country roads"

"Poor broadband connectivity and mobile phone signals"

"Dog fouling on pavements all round the village"

"Increasing urbanisation"

"The dangerous roads, especially B9099 and the back road as you leave Stanley from Duchess Street that passes past the active kids park – this road is really dangerous with cars often on the wrong side of the road"

"Urgent need for investment in infrastructural developments to meet the needs of existing residents and the occupants of the additional housing currently under construction"

"Lack of amenities such as a community café"

"The ever increasing anti-social behaviour, just seems to be getting worse and worse"

"Not enough going on in terms of small groups, children friendly activities"

"Youths drinking and swearing in the school grounds in the evenings"

"Stanley used to be a nice quiet little village, now it seems to be just another off shoot of Perth"

"A big selection of the mill buildings is derelict and just begging for renewal - could make an amazing destination"

"Not easy to get in and out of the village on foot/bike"

"Lack of community spirit, has got lost along the way"

"Scope for intergenerational activities and health promotion and prevention not realised"

"A lack of pride and ownership, aside from those involved in community organisations"



# STANLEY AND DISTRICT

## OUR VISION FOR THE FUTURE

This statement has been prepared using local resident and organisation answers to the question

**"What would you wish the area to be like in 20 years' time?"**

### COMMUNITY LED ENVIRONMENTAL EXCELLENCE WITH SUSTAINABLE AND CREATIVE INITIATIVES

"A Stanley that is sustainable in every respect"

"Local renewable energy solutions"

"Five Mile Wood/Taymount Wood bringing many visitors to the area for all the wildlife and nature"

"Much wilder and greener with food forests, large nature corridors and huge increase in wildlife and biodiversity"

"A vibrant village where residents worked together to improve the overall environment, and young people appreciate their environment"

"Stanley and District is a Biodiversity Village/area"

Photo credited to:  
Stanley Development Trust



### A SAFE, FRIENDLY AND DYNAMIC COMMUNITY OF CHOICE THAT NURTURES EVERYONE

"A pleasant safe place to live where people didn't live in fear/worry"

"A vibrant community with groups working together for the benefit of all ages"

"A village with a thriving community of all ages with sports facilities, parks and community areas for people to meet, relax and enjoy"

"A place to live that's community minded, that nurtures the next generation and encourages them to be part of the community"

"Well regarded, somewhere families desired to live and work"

"School suitable for all families in the village with wraparound care"

"Infrastructures that support older adults to live safely in their own homes with a longer-term strategy to explore the feasibility of local care home solutions or similar"

### WELL CONNECTED COMMUNITIES WHO CELEBRATE AND PROMOTE THEIR SPECIAL HERITAGE

"All the districts to be well connected and accessible via public transport"

"More communal green space and access paths, connections, green corridors to other parts of the district"

"A huge network of paths and walks to link all the wonderful woods with the villages"

"For the history of the area and the natural beauty to be preserved and not damaged or forgotten about"

"Identify the key attributes of the Stanley and District area and make more of their potential to promote as a visitor destination"

Photo Credited to:  
Stanley Development Trust





## A BEFITTING INFRASTRUCTURE THAT BLENDS WITH THE WEALTH OF RURAL CHARACTERISTICS

"Infrastructure has been adequately increased to meet the needs of the local population"

"With the times, but without losing its community and personal feel"

"Retain the country village feel"

"Mostly unchanged in its rural simple beauty and access to the countryside/river"

"Keep the rural, edge of the Highlands, feel of the area"

"High speed internet making it a prosperous commuter village with a vibrant local economy"

"Future growth considered in all projects with realistic plans and commitment for services to accommodate new house builds"



## A PROSPEROUS, MODERN PLACE TO LIVE, WORK AND VISIT

"Stanley continuing to be a great place to work, live and enjoy the outdoors with lots of sports and outdoor opportunities for our young people"

"A thriving, bustling village with some vibrancy, with decent housing stock to provide decent living for all"

"Thriving wee village with a café and events that variety of people would want to go to"

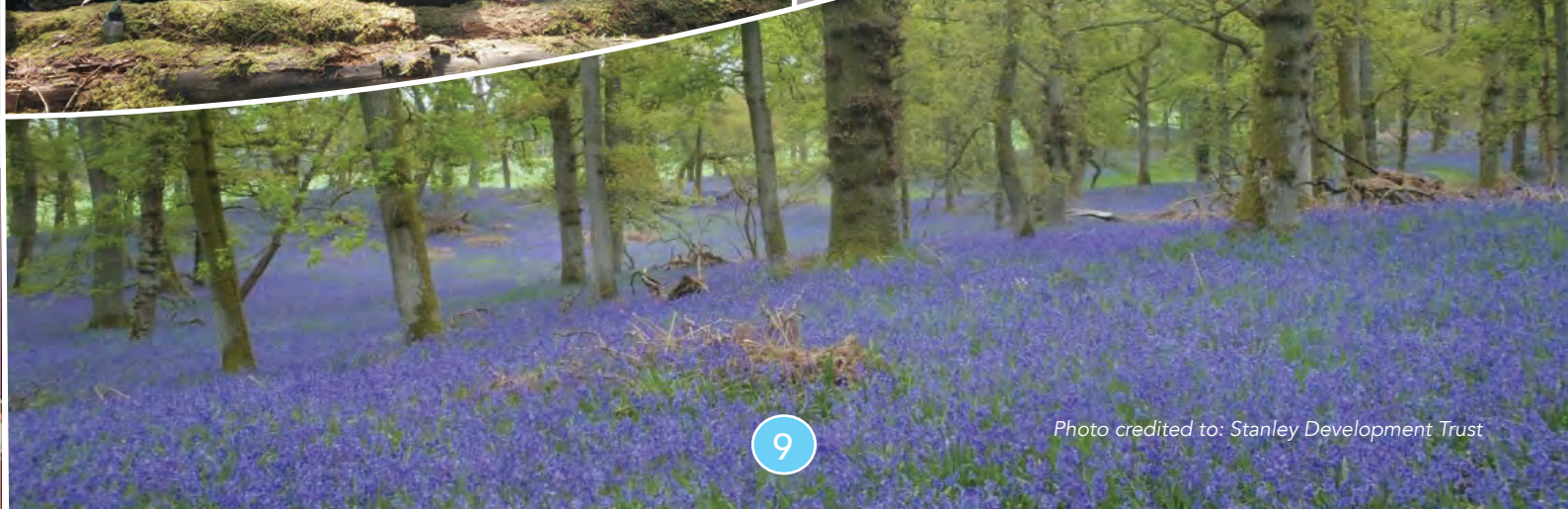
"Embrace and encourage activities that will enhance the future of our village and support local businesses"

"Development/creation of flexible sites with potential for varied sizes of units to encourage diverse range of occupants"

"Maximise the potential of the River Tay and beach area to attract tourists"



All other photos on this page credited to:  
West Stormont Woodland Group





# MAIN STRATEGIES AND PRIORITIES

These are the main strategies and priorities the community will work towards achieving in partnership with public agencies and other supporters.

## THEME 1: COMMUNITY RECREATION, HEALTH AND WELLBEING

Local people were keen for more activities that span a wider range of age groups, and in particular, for the older young people in the area. Suggestions were also made about making more use of the natural environment for the benefit of residents that are affordable and accessible.

In general, the community were very positive about the potential of a new community hub being built in the future but other opportunities were also put forward as being available to explore for more immediate development.

Many frustrations were apparent with the level of service at the health centre and concerns at the lack of care options for older people were also mooted.

The area has so many great groups and volunteers but there appeared to be a demand for more specialist support in terms of funding, volunteers, upskilling and governance.



### Main priorities

- Develop more activities and spaces for children, families and older young people
- Improve outdoor recreation facilities, spaces and activities for all
- Aim to build new Community Hub (planning permission dependent)
- Raise awareness of environmental initiatives and the vision for Biodiversity Village status
- Establish Health & Wellbeing and Care User Groups
- Develop community organisation/group support

## THEME 2: ENVIRONMENT AND HERITAGE

Many respondents thought that more could be done to promote the Stanley and District area and more awareness raised locally to attract new visitors. Suggestions were made about how to enhance and develop green spaces but also how to connect and upgrade the smaller settlements in the community whilst continuing to support the Stanley-Luncarty cycle path.

Dog fouling and littering featured as serious issues in some areas and also presented health and safety concerns.

There was seen to be an opportunity to support specific environmental initiatives in the area, which are already successfully spearheaded locally and suggestions were made as to how this could be broadened out further to actively educate and involve the community.

Issues associated with new builds, hedge cutting, loss of verges etc raised some land management concerns.



### Main priorities

- Make more of local heritage
- Develop/improve green spaces, paths and active travel networks
- Reduction of dog fouling and littering
- Raise awareness of environmental initiatives and the vision for Biodiversity Village status



## THEME 3: TRAFFIC MANAGEMENT, TRANSPORT AND ROADS

There were several areas of concern highlighted in terms of speeding traffic, dangerous driving and volume of traffic. The condition of the roads were also raised across the area with a focus on Stanley village as a result of the new house construction.

In general, there was satisfaction with public transport provision but regular mention was made about transport gaps for certain populations and concerns raised if services continued to decrease, this would impact on social mobility.



### Main priorities

- Traffic calming and safety measures
- Improve condition of roads network and footpaths
- Improve public transport provision

## THEME 4: LOCAL ECONOMY, SERVICES AND VILLAGE INFRASTRUCTURE

It emerged during the consultation process that there was no 'one stop shop' to find out about all the local businesses etc in the area. There was a relatively high level of satisfaction with retail outlets and hospitality and people seemed to support these, but the community would like more variety.

There was a sense that the area wasn't maximising its potential to attract tourists and much more could be done to promote all of its attributes. This could be supported by the need mentioned for the infrastructure to have ongoing investment to ensure the community thrives alongside the new house builds.

Diminishing services and amenities were also frequently cited and local people were worried about these in the future.

Certain populations were dissatisfied with childcare provision to the point of moving house and/or schools.



### Main priorities

- Audit and directory of businesses, farms and estates
- Continue to support and develop local business
- Develop and promote Stanley and District as a Visitor Destination
- Infrastructure investment
- Maintain and improve existing services and amenities
- Develop childcare provision

## THEME 5: COMMUNITY CAPACITY AND ENGAGEMENT

All age groups who took part in the consultations expressed frustration, not only with the lack of activities for youths, but also that they were not represented on committees or offered decision making opportunities.

Many groups in the area were worried about sustainability in the future and how difficult it was to recruit new members and volunteers.

Just as many people voiced they were unhappy with the lack of respect by some members of the community, others were inclined to consider how to better include them in community life.

Social isolation was not described as only being applicable to older people but to other sectors of the community too. It was also known that the community engagement processes for this action plan were not able to reach all representative populations.

People frequently commented on the lack of information available about events, activities etc or the formats they were shared in. It was suggested that new approaches were needed to include everyone in community life and in particular, people moving into the new build houses and those living at Stanley Mills.



### Main priorities

- Establish a Youth Voice in the area
- Succession planning for groups and organisations
- Understanding community demographics
- Develop community involvement and engagement



### COMMUNITY RECREATION, HEALTH AND WELLBEING

#### PRIORITIES

#### NEXT STEPS

Develop more activities and spaces for children, families and older young people

- Consult with different age groups for ideas on new activities
- Multi-organisational approach to reach and engage secondary age children and older young people to co-produce activities that meet their needs
- Apply for funding to support start-up e.g. deliverers, venues, equipment and training
- Volunteer recruitment campaign to support activities
- Identify a warm space for older young people where they can participate in unstructured activities and meet friends
- Identify other organisations and partners to enhance provision/negotiate local resident discounts

#### Action by

Stanley Development Trust, Stanley Time Bank, West Stormont Woodland Group, relevant services, parents, children, young people

Improve outdoor recreation facilities, spaces and activities for all

- Identify locations to develop and improve outdoor recreation provision and explore feasibility e.g. outdoor gym, skatepark, football pitch, archery
- Feasibility of affordable water-based activities aimed at members of the community
- Additional environmentally friendly equipment installed in the play park, in consultation with parents

#### Action by

Stanley Development Trust, Perth & Kinross Council, River Tay Community Sport Hub, West Stormont Woodland Group, outdoor activity providers, parents

Aim to build new Community Hub (planning permission dependent)

- Develop a fundraising strategy with a wide range of opportunities for local people of all ages to actively support fundraising activities
- Establish a working group to support the work of Stanley Development Trust

#### Action by

Stanley Development Trust, Perth & Kinross Council, community groups and organisations, residents

Explore opportunities for existing indoor facility development

- Audit of existing facilities and availability for community use
- Work in partnership with preferred facility/ies to develop a long-term action plan of improvements and funding requirements to upgrade/modernise
- Collaborative funding application

#### Action by

Stanley Development Trust, community groups and organisations with facility space

## PRIORITIES

## NEXT STEPS

Establish Health & Wellbeing and Care User Groups

- Approach Stanley Medical Centre and establish a Health & Wellbeing User Group to discuss local experiences, share ideas for improvement etc:
  - Stanley Medical Centre and a diverse range of patients, Health & Social Care teams, Care & Wellbeing Project etc
- Identify a key group of older/vulnerable adults living in the area and establish a Care User Group to discuss short and long-term care solutions and feasibility of a new private care home in the area:
  - PKAVS/Carers, Access Team, Early Intervention and Prevention Team, Self-Directed Support, Health & Social Care teams
- Agreed protocols for meetings, feedback and action

Action by

Stanley Development Trust, Stanley Medical Centre, Perth & Kinross Council, patients, PKAVS, carers, care home providers

Develop community organisation/ group support

- Regular training and development opportunities e.g. funding workshops, volunteer recruitment, visitor talks, developing policies and procedures
- Quarterly network meetings for community groups and organisations to share ideas, expertise and resources
- Test local interest in re-establishing a Community Council

Action by

Stanley Development Trust, community groups and organisations, external training providers and relevant visitors

## THEME 2:

## ENVIRONMENT AND HERITAGE

## PRIORITIES

## NEXT STEPS

Make more of local heritage

- Improved and additional signage, art installation boards, interpretation boards
- Develop an educational heritage trail to encourage visitors to the area
- Regular promotion of local photographs, stories of interest and interesting facts
- New exhibitions at Stanley Mills
- Cultural projects in partnership with Stanley Mills e.g. Gaelic Talk & Walk
- New Community Hub to host cultural information and displays

Action by

Stanley Development Trust, Historic Environment Scotland, Scottish Natural Heritage, Visit Scotland, West Stormont Historical Society, West Stormont Woodland Group

Develop/improve green spaces, paths and active travel networks

- Develop an Active Travel Plan including walking events
- Continue to support progress on the Stanley-Luncarty path development
- Local involvement with River Tay Way Scheme
- Develop a cycle friendly network
- Develop new picnic areas and seating
- Develop new/maintain existing paths to connect nearby communities and a footbridge over the River Tay at Thistlebrig (shortest point)
- Accessible paths for multiple user groups

Action by

Perth & Kinross Council, New Access and Travel group convened by Stanley Development Trust and West Stormont Woodland Group, local businesses



## THEME 2:

### ENVIRONMENT AND HERITAGE

#### PRIORITIES

#### NEXT STEPS

Reduction of dog fouling and littering

- Erect educational dog fouling signage in key locations and secure supplies of dog poo bags
- Signage to highlight dangers of littering and litter picking on busy roads
- Traffic management support on community litter picking days on C406
- Dog warden visits

Action by

Stanley Development Trust, C406 Tackle Litter Group, local agencies, Perth & Kinross Council

Raise awareness of environmental initiatives and the vision for Biodiversity Village status

- Actively support the work of West Stormont Woodland Group to bring Taymount Wood and Five Mile Wood into community ownership e.g. fundraising, donating, membership, volunteering, sharing skills
- Develop Eco-Principles for residents, businesses and landowners in the Stanley and District area e.g.
  - Recycling, repair, re-use, swap-hub
  - Smart/green design
  - Land management measures
- Engage in the mapping Exercise towards Biodiversity Village status

Action by

West Stormont Woodland Group, Tayside Biodiversity Partnership, residents, businesses, community groups and organisations

## THEME 3:

### THEME 3: TRAFFIC MANAGEMENT, TRANSPORT AND ROADS

#### PRIORITIES

#### NEXT STEPS

Traffic calming and safety measures

- Focus on key locations across the area for improvements:
  - B9099 including the Gowrie Straight
  - C406
  - Duchess Street-A9
- Request improved and regular police presence at key times and locations
- Campaign to install traffic calming measures:
  - 20mph limit to extend out of the village towards Murthly on B9099
  - 20mph limit to also extend to side streets including Mill Street, Store Street, Percy Street, King Street
  - VAS (vehicle activated signs) to be installed in both directions through Stanley
  - Passing places Duchess Street-A9

Action by

Coordinated and strategic campaign for traffic calming and safety measures including e.g. Councillors, Stanley Development Trust, Perth and Kinross Council

Improve conditions of roads network and footpaths

- Priority locations for improvement:
  - Duchess Street-A9
  - Improve footpath over bridge to Active Kids Adventure Park
  - Safer pedestrian access to Linn Beach

Action by

Councillors, Stanley Development Trust, Perth & Kinross Council, land owners, house builders

## PRIORITIES

## NEXT STEPS

Improve public transport provision

- Collate evidence of need to enhance bus provision and present to Stagecoach:
  - o For people who work in Perth, Blairgowrie etc
  - o At evenings and weekends
  - o To re-instate the Kinclaven route
  - o To Bankfoot
- Discussions with Stagecoach to re-instate public use of school bus
- Explore options to undertake feasibility study to reinstate a train stop at Stanley

Action by

New Public Transport Action group convened by Stanley Development Trust

## THEME 4:

## LOCAL ECONOMY, SERVICES AND VILLAGE INFRASTRUCTURE

### PRIORITIES

### NEXT STEPS

Audit and directory of businesses, farms and estates

- Audit of existing businesses, small to large including sole traders, farms, estates
- Create an online directory and market it across the area and beyond

Action by

Stanley Development Trust, businesses

Continue to support and develop local business

- Develop a Buy Local Action Plan
- Attract new businesses, products and services to the area e.g. identify/develop affordable work spaces, regular markets with different themes to promote local produce, crafts, wider range of hospitality options etc
- Promote local hospitality venues for events
- Identify business support needs and organise networking/training opportunities

Action by

Stanley Development Trust, businesses, all members of the community, GrowBiz, Business Gateway

Develop and promote Stanley and District as a Visitor Destination

- Audit of all community assets, attractions and attributes
- Agree destination purpose/s for Stanley and District
- Identify funding to develop Stanley Development Trust website as a central and improved source of marketing
- Improved/additional signage to encourage passers-by to stop and visit the area
- Liaise with Historic Environment Scotland to develop disused buildings

Action by

Stanley Development Trust, West Stormont Woodland Group, Historic Environment Scotland, West Stormont Historical Society

Infrastructure investment

- Transparency on community benefit/builder contributions related to new builds
- Clear and accessible communications to discuss infrastructure concerns if service provision is not developing with growth of the village
- Community consultation to agree siting of a mast to improve broadband and mobile phone signal coverage across the whole area

Action by

Stanley Development Trust, Councillors, Perth & Kinross Council, builders



## THEME 4:

### LOCAL ECONOMY, SERVICES AND VILLAGE INFRASTRUCTURE

#### PRIORITIES

#### NEXT STEPS

Maintain and improve existing services and amenities

- Identify a Perth & Kinross Council Comfort Scheme partner for visitors
- Utilise Perth & Kinross Council's short-term hire of mobile toilets for events
- Explore options with the Post Office to start a Stanley Mobile Service
- Health & Social Care Teams to actively promote opportunities for development/networking to community groups
- Promote social prescribing and the ability to self-refer
- Request regular police and community warden presence to pro-actively visit the area

Action by

Stanley Development Trust, Perth & Kinross Council, Post Office, Police Scotland

Develop childcare provision

- Identify demand for different childcare options e.g:
  - o Child minders
  - o Private nursery
  - o Wrap around care
- Promote preferred options as a small business opportunity in the area
- Promote Perth & Kinross Council child minding start-up grant

Action by

Stanley Development Trust, Stanley Primary School, Childcare Strategy Team, Perth & Kinross Council

## THEME 5:

### COMMUNITY CAPACITY AND ENGAGEMENT

#### PRIORITIES

#### NEXT STEPS

Establish a Youth Voice in the area

- Invite young people to set up a Youth Forum to offer solutions on issues that matter to them
- Identify leadership roles in the community
- Encourage community groups and organisations to recruit representation from young people onto committees, boards etc
- Offer training opportunities to build confidence and skills

Action by

Stanley Development Trust, young people, parents, community groups and organisations

Succession planning for groups and organisations

- Training to plan for future sustainability including:
  - o How to grow membership
  - o Recruitment and retention of volunteers
  - o Shadowing/Rotation of roles
  - o Workforce planning/skills matrix – university, moving house, retirement etc

Action by

Community groups and organisations, Perth & Kinross Council, PKAVS

## PRIORITIES

## NEXT STEPS

Understanding community demographics	<ul style="list-style-type: none"> <li>• Develop a shared understanding of demographics across the community and how to connect with hard to reach groups</li> <li>• Create co-produced projects that offer effective solutions to tackle needs</li> <li>• Identify training and/or funding to support inclusion e.g. accessibility, transport, befriending</li> </ul>
Action by	Stanley Development Trust, local authority/agencies, community groups and organisations
Develop community involvement and engagement	<ul style="list-style-type: none"> <li>• Develop a communications strategy:               <ul style="list-style-type: none"> <li>◦ Share information in different formats e.g. hard copy, social media, website, notice boards</li> <li>◦ Targeted groups of the community</li> <li>◦ Residents in new build homes and Stanley Mills</li> </ul> </li> <li>• Investigate the possibility of a new community operated notice board at Stanley Medical Centre</li> <li>• Open events inviting all/targeted members of the community e.g. families, older people, youth</li> <li>• Encourage all members of the community to consider their skillset/ volunteering, focusing on the benefits for them e.g. have fun, make new friends, learn new skills, training etc. offering a wide spectrum of opportunities to get involved</li> <li>• Explore opportunities for local businesses to support community initiatives e.g. volunteering, promotion</li> <li>• Establish new community engagement projects between Stanley Mills and the village</li> <li>• Identify new funding streams for Stanley Development Trust to build capacity</li> </ul>
Action by	Stanley Development Trust, community groups and organisations, Stanley Mills Owners Association

## MAKING IT HAPPEN

The priorities in this action plan will be taken forward by our local community groups working together and with a range of public, private and voluntary sector partners. We will also need to grow our capacity, volunteering and resources as a community to help deliver some of the important projects in this Action Plan.

If you would like to help take action in developing any of the priorities, or just find out further information please email [info@stanleydevelopmenttrust.org](mailto:info@stanleydevelopmenttrust.org)

### Keeping the Action Plan Up to Date

We will organise a Community Action Plan Review meeting annually to report back to the Community on how the plan is progressing and to see what progress is being made. Updates on progress will also be available on the Community Action Plan area of the Stanley Development Trust website.



# OUR COMMUNITY

Photo credited to: DJ Ally Bongo



Photo credited to: Stanley Development Trust

Photo credited to: Stanley Development Trust



Photo credited to: West Stormont Woodland Group



Photo credited to: West Stormont Woodland Group



Photo credited to: Stanley in Bloom



# OUR COMMUNITY IN LEGO

Bowling green and clubhouse



Stanley Store



Takeaway at the Cross



War Memorial



Photos credited to: Fiona Davidson



# COMMUNITY ACTION PLAN

## 2023 - 2028

This Community Action Plan sets out the priorities for the development of the Stanley and District area over the next 5 years as determined by the community through an extensive process of community engagement carried out over a seven-month period from January – August 2023.

### The Plan contains

- A summary profile of the community now
- Our main likes and dislikes as identified in our Community Views Survey
- Our Vision Statement for the future of Stanley and District
- The main themes and priorities for action
- Information on how you can stay in touch and get involved

The Plan is jointly owned by all the organisations and individuals that took part in its preparation. We will be working together to ensure its implementation over the next 5 years.

***This Community Action Plan and all the reports from the community engagement are available online at***

<https://www.stanleydevelopmenttrust.org>

### Acknowledgements

We are grateful to the Perth & Kinross Community Led Local Development Programme and Perth & Kinross Council for funding the Community Action Plan (CAP).

STAR Development Group templates and guidance were used throughout the Community Engagement processes.



**STAR**  
DEVELOPMENT  
GROUP



[www.pkleader.org](http://www.pkleader.org)



Stanley Development Trust's CAP Consultant helped to carry out all the community engagement work. The Consultant was funded by the Perth & Kinross Community Led Local Development Programme.

